

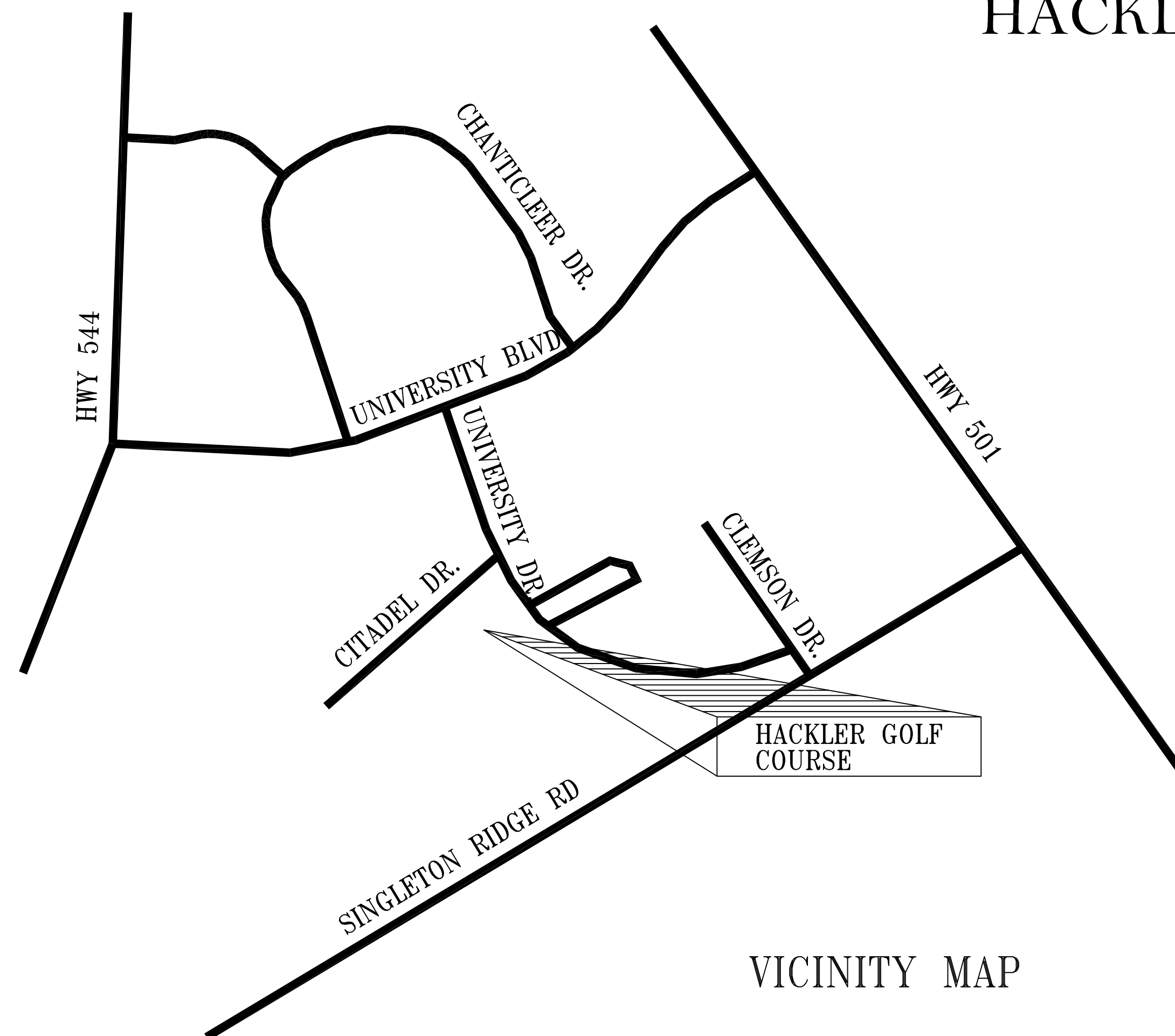


COASTAL CAROLINA UNIVERSITY

HACKLER GOLF COURSE CART PATHS AND CURBING RE-BID

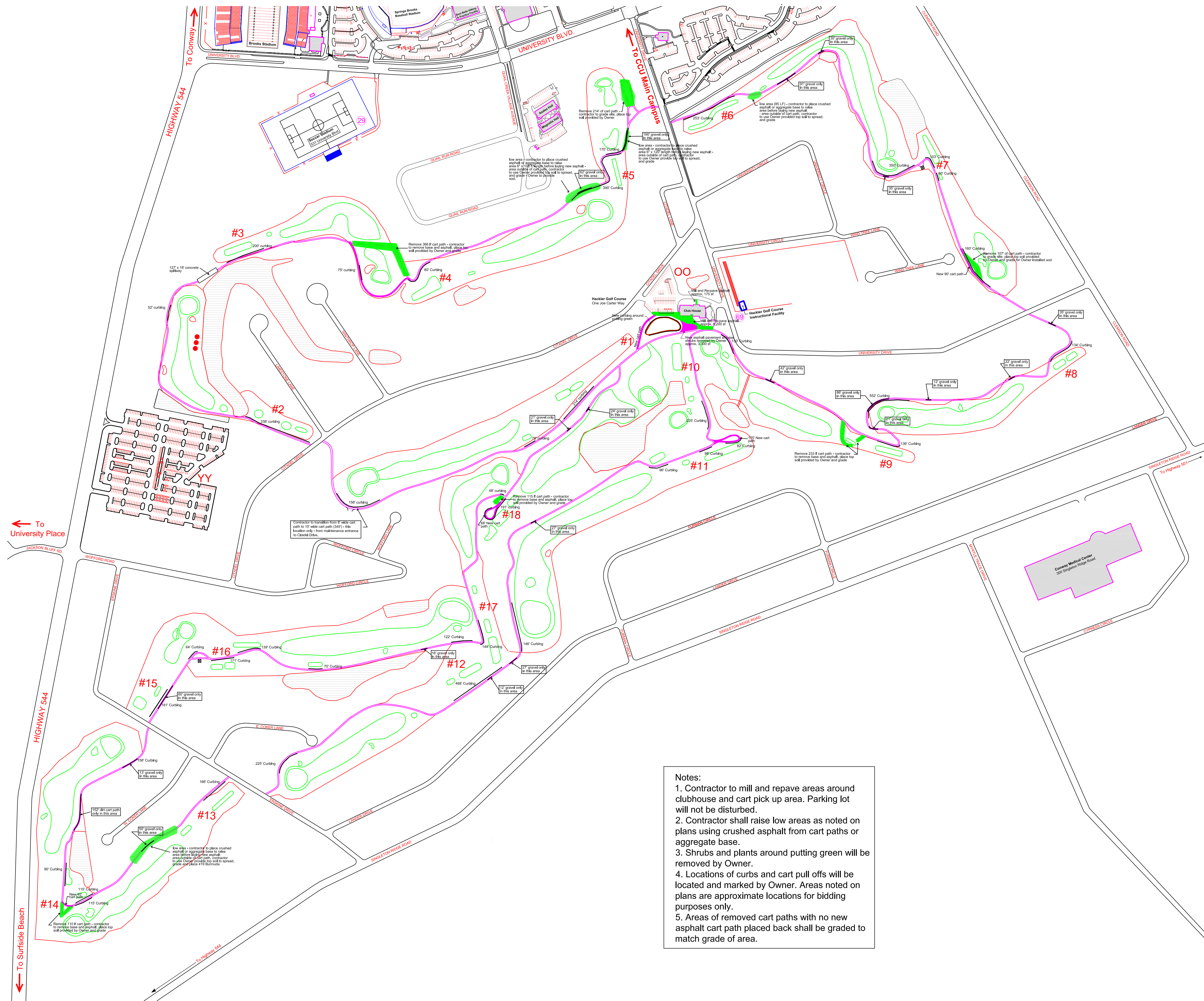
H17-N129-MJ

DECEMBER 7, 2021



VICINITY MAP

DRAWING INDEX	
SHEET #	NAME
C1 of 6	GOLF COURSE MAP
C2 of 6	OVERALL SITE PLAN
C3 of 6	SITE PLAN - HOLE 5-11, 18
C4 of 6	SITE PLAN - HOLES 12 - 17
C5 of 6	SITE PLAN - HOLES 1 - 5, 18
C6 of 6	DETAILS



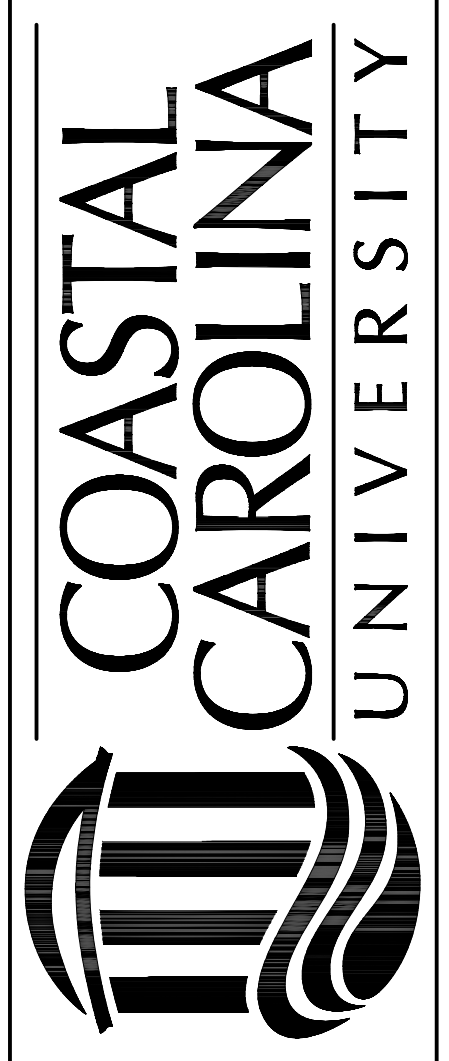
Notes:

1. Contractor to mill and repave areas around clubhouse and cart pick up area. Parking lot will not be disturbed.
2. Contractor shall raise low areas as noted on plans using crushed asphalt from cart paths or aggregate base.
3. Shrubs and plants around putting green will be removed by Owner.
4. Locations of curbs and cart pull offs will be located and marked by Owner. Areas noted on plans are approximate locations for bidding purposes only.
5. Areas of removed cart paths with no new asphalt cart path placed back shall be graded to match grade of area.

REVISION	DATE

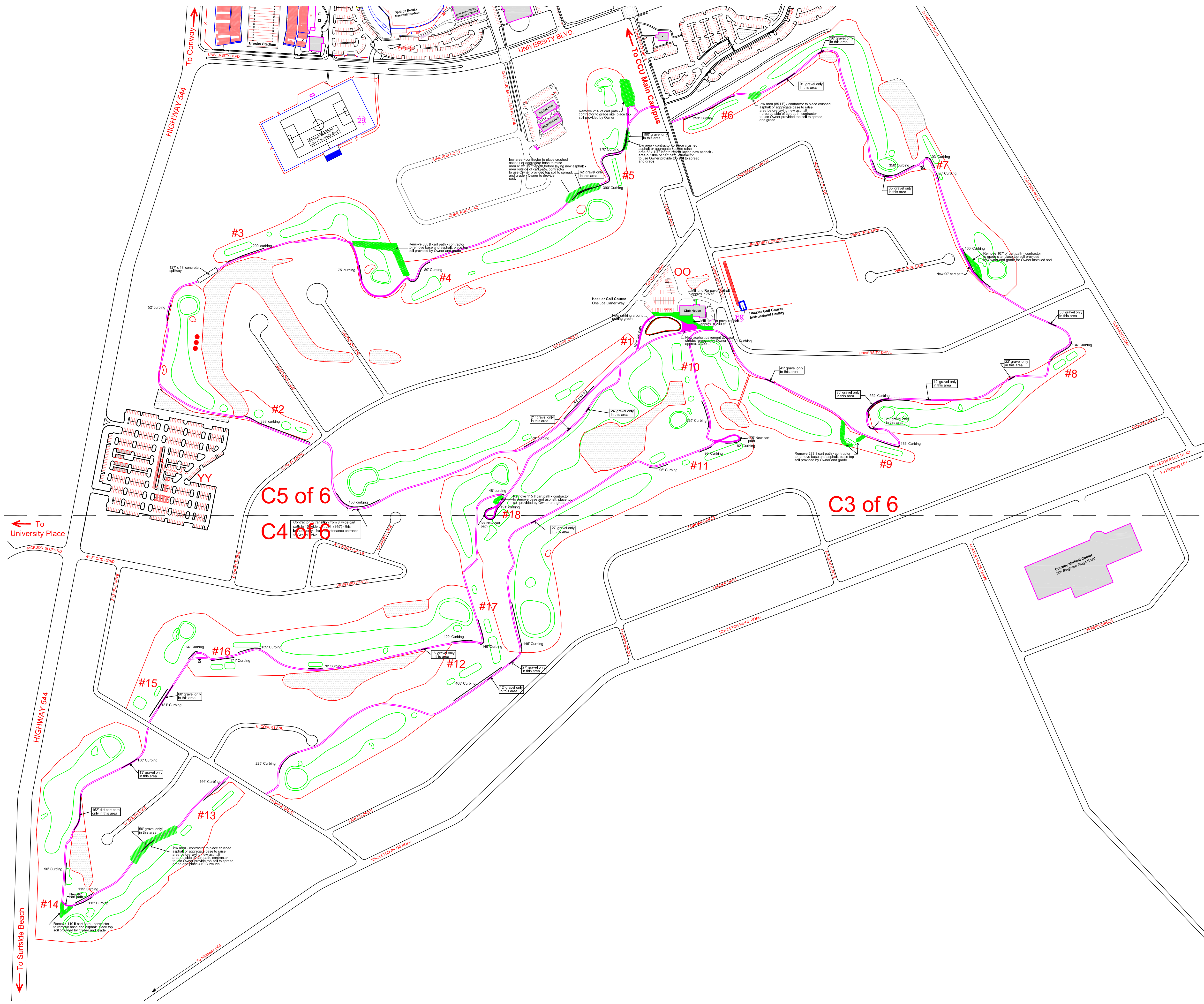
HACKLER GOLF COURSE CART PATHS AND CURBING
 RE-BID
 PROJECT NO. H17 - N129 - MJ
 GOLF COURSE MAP
 FACILITIES DESIGN & ENGINEERING

FACILITIES DESIGN & ENGINEERING
 P.O. BOX 261954
 CONWAY, SC 29528
 One Joe Carter Way
 CONWAY, SC 29526



SEAL

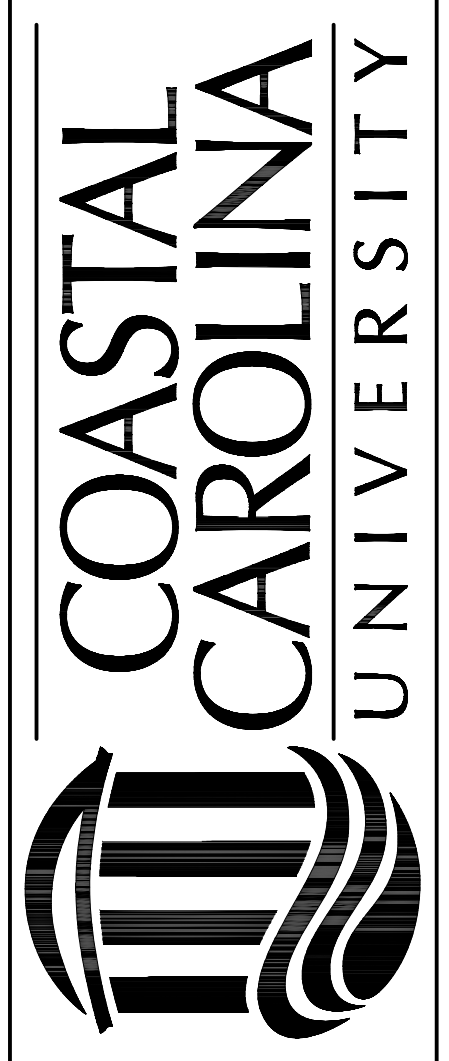
DATE: 12-7-2021
 SCALE: NTS
 DESIGN BY:
 DRAWN BY: MWA
 SHEET



REVISION	DATE

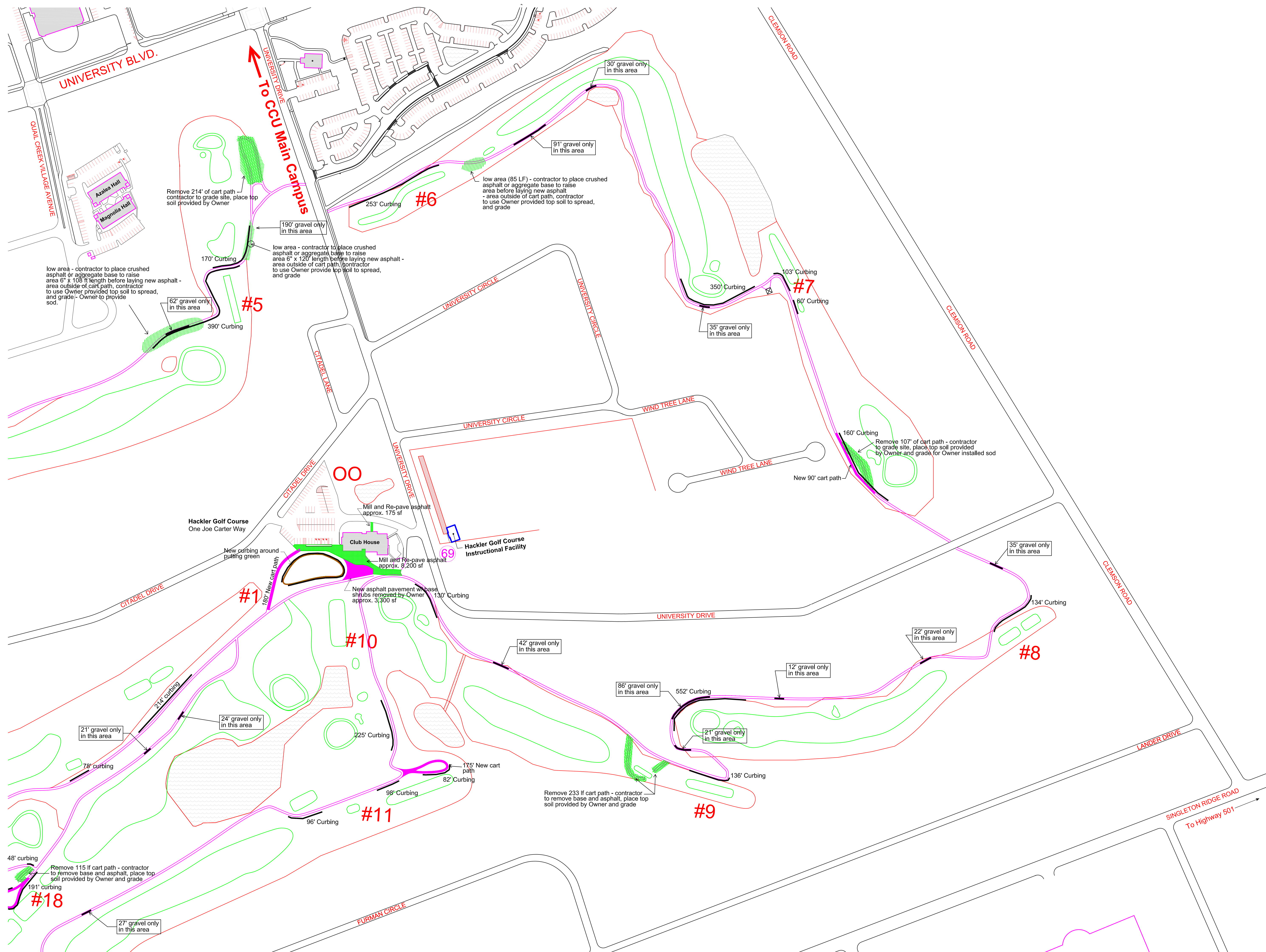
HACKLER GOLF COURSE CART PATHS AND CURBING
 RE-BID
 PROJECT NO. H17 - N129 - MJ
 OVERALL SITE PLAN
 FACILITIES DESIGN & ENGINEERING

FACILITIES DESIGN & ENGINEERING
 P.O. BOX 261954
 CONWAY, SC 29528
 One Joe Carter Way
 CONWAY, SC 29526



SEAL

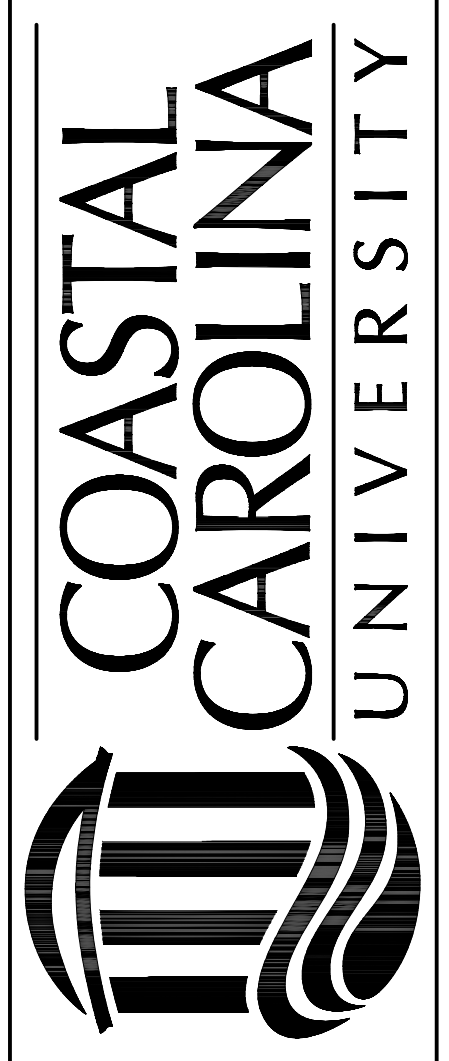
DATE: 12-7-2021
 SCALE: NTS
 DESIGN BY:
 DRAWN BY: MWA
 SHEET



REVISION	DATE

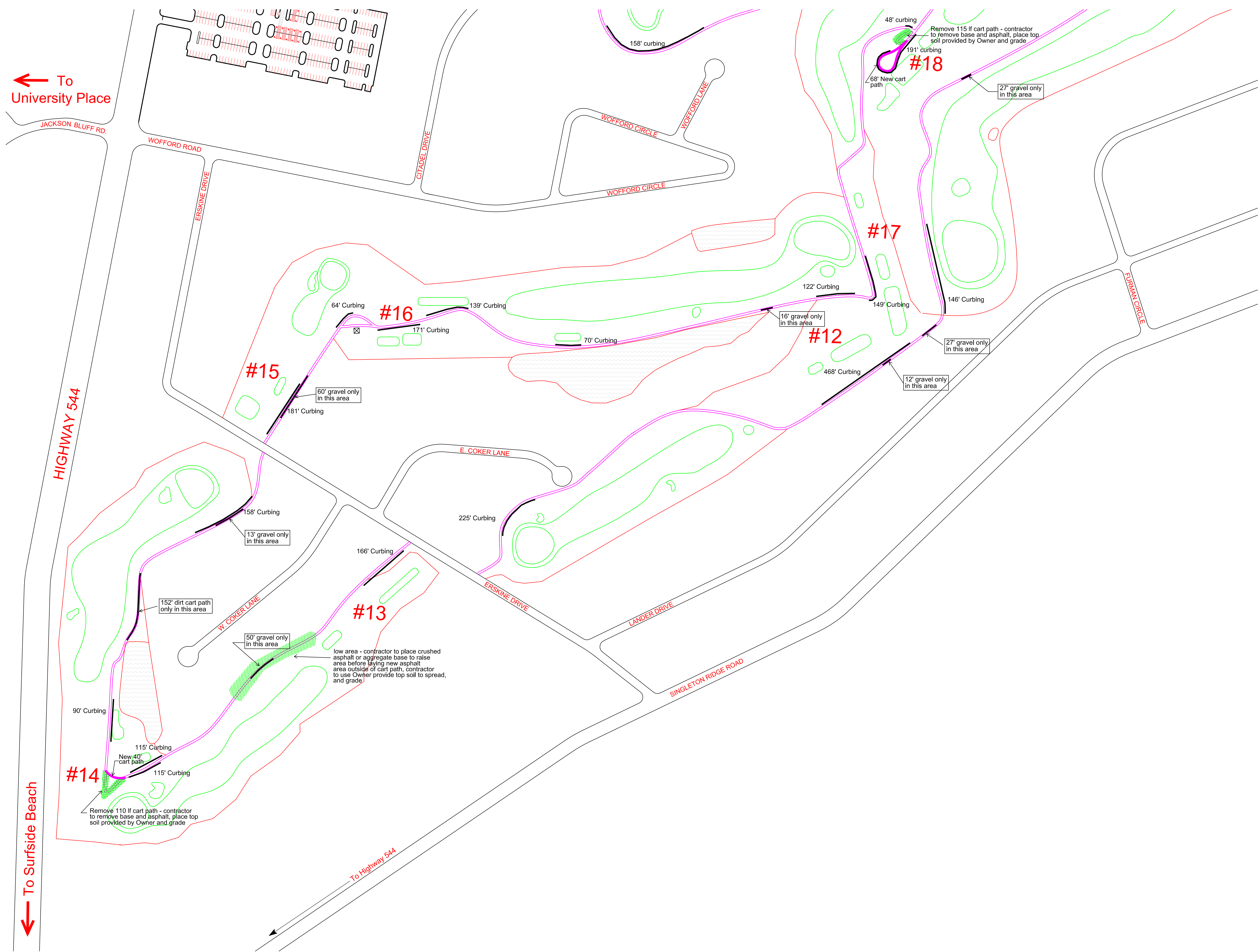
HACKLER GOLF COURSE CART PATHS AND CURBING
 RE-BID
 PROJECT NO. H17 - N129 - MJ
 SITE PLAN - HOLES 5 - 11, 18
 FACILITIES DESIGN & ENGINEERING

FACILITIES DESIGN & ENGINEERING
 P.O. BOX 261954
 CONWAY, SC 29528
 One Joe Carter Way
 CONWAY, SC 29526



SEAL

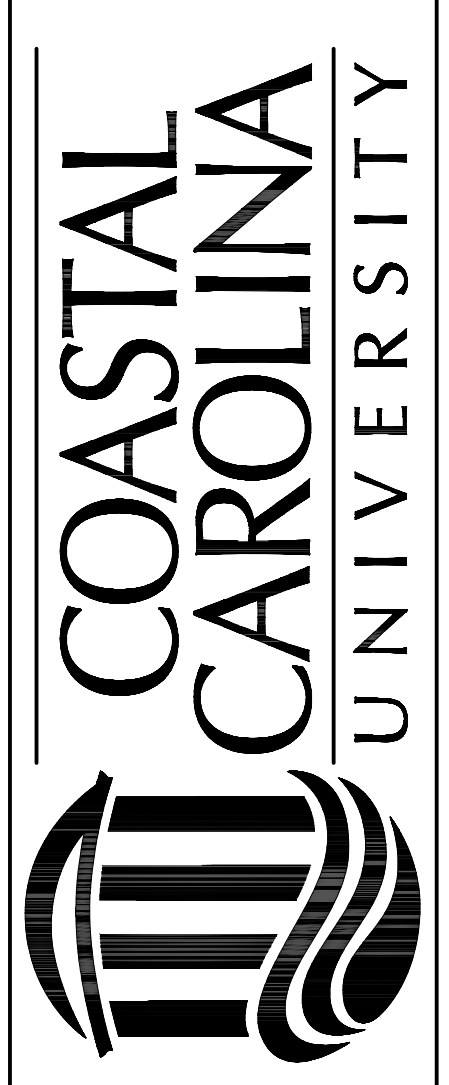
DATE: 12-7-2021
 SCALE: NTS
 DESIGN BY:
 DRAWN BY: MWA
 SHEET



REVISION	DATE

HACKLER GOLF COURSE CART PATHS AND CURBING
 RE-BID
 PROJECT NO. H17 - N129 - MJ
 SITE PLAN - HOLES 12 - 17
 FACILITIES DESIGN & ENGINEERING

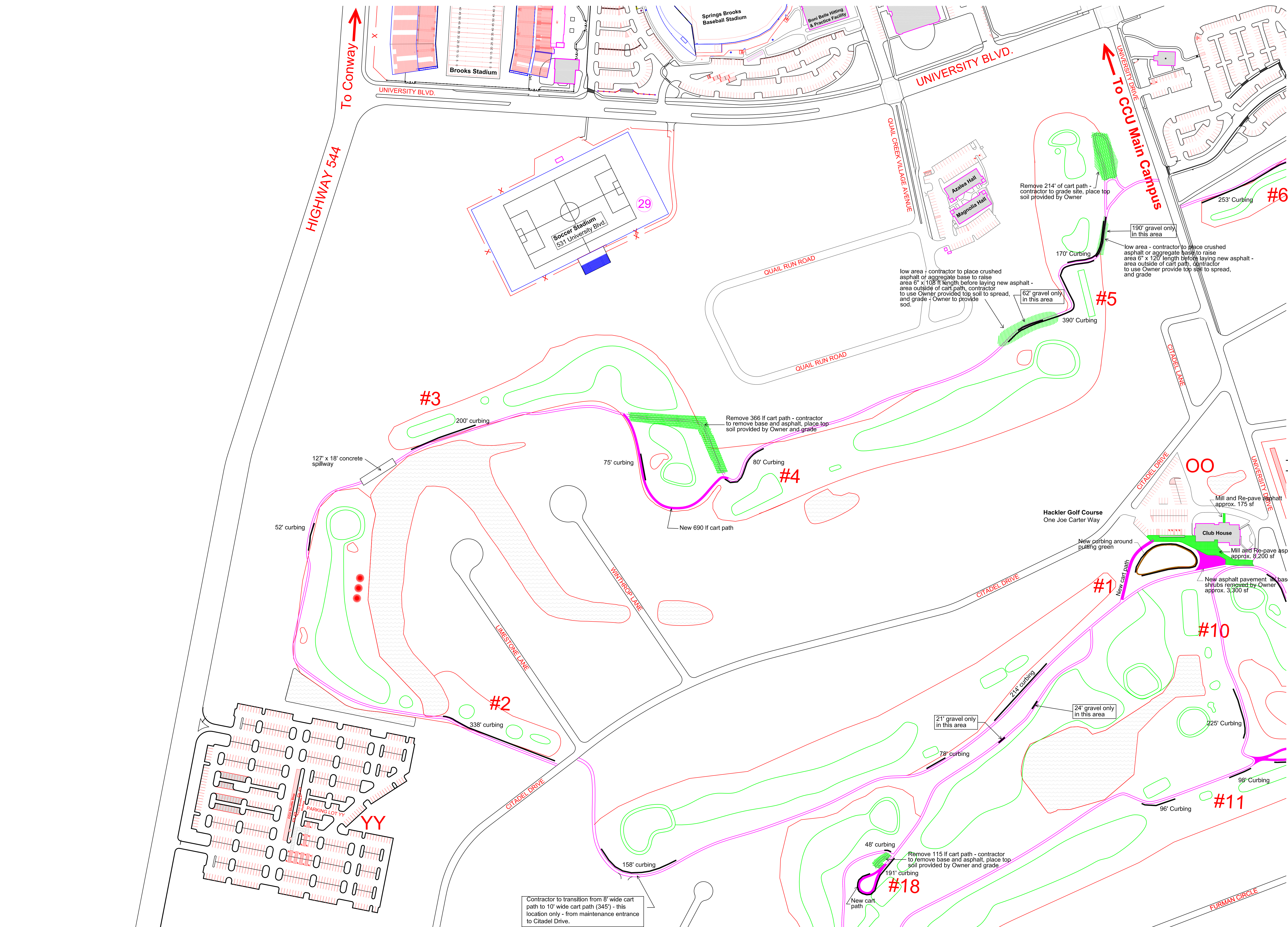
FACILITIES DESIGN & ENGINEERING
 P.O. BOX 261954
 CONWAY, SC 29528
 One Joe Carter Way
 CONWAY, SC 29526



SEAL

DATE: 12-7-2021
 SCALE: NTS
 DESIGN BY:
 DRAWN BY: MWA
 SHEET


C-4
 OF 6



To Conway ↑

↑ To CCU Main Campus

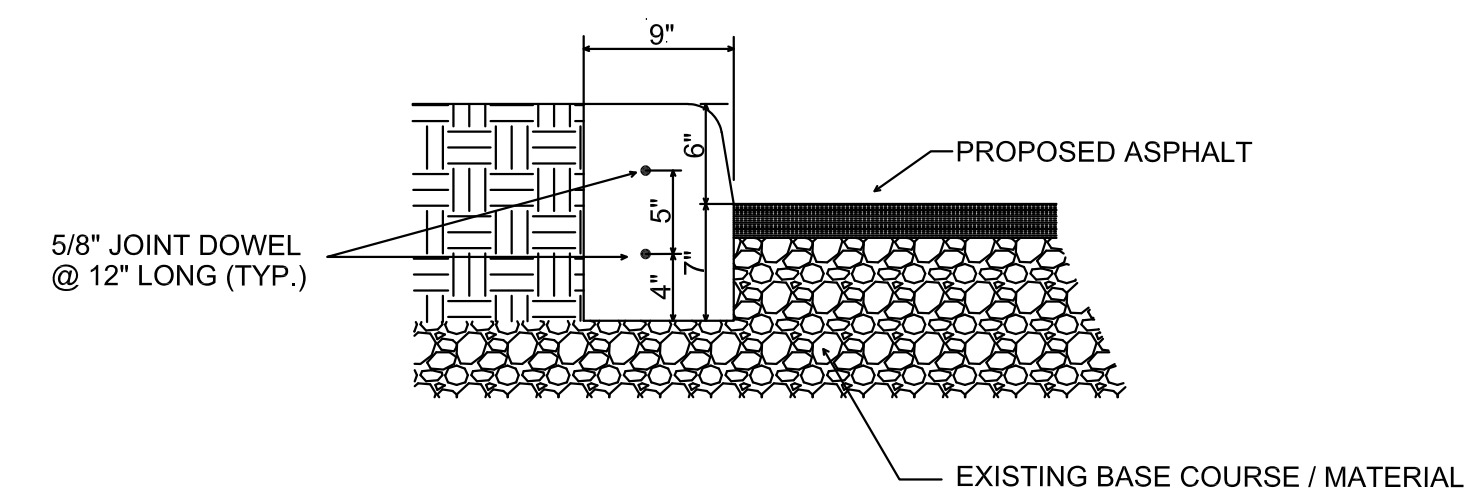
Contractor to transition from 8' wide cart path to 10' wide cart path (345') - this location only - from maintenance entrance to Citadel Drive.

REVISION	DATE
HACKLER GOLF COURSE CART PATHS AND CURBING RE-BID PROJECT NO. H17 - N129 - MJ SITE PLAN - HOLES 1 - 5, 18	
FACILITIES DESIGN & ENGINEERING	
P.O. BOX 261954 CONWAY, SC 29528 One Joe Carter Way CONWAY, SC 29526	
 COASTAL CAROLINA UNIVERSITY	
SEAL	
DATE:	12-7-2021
SCALE:	NTS
DESIGN BY:	
DRAWN BY:	MWA
SHEET	
C-5 OF 6	

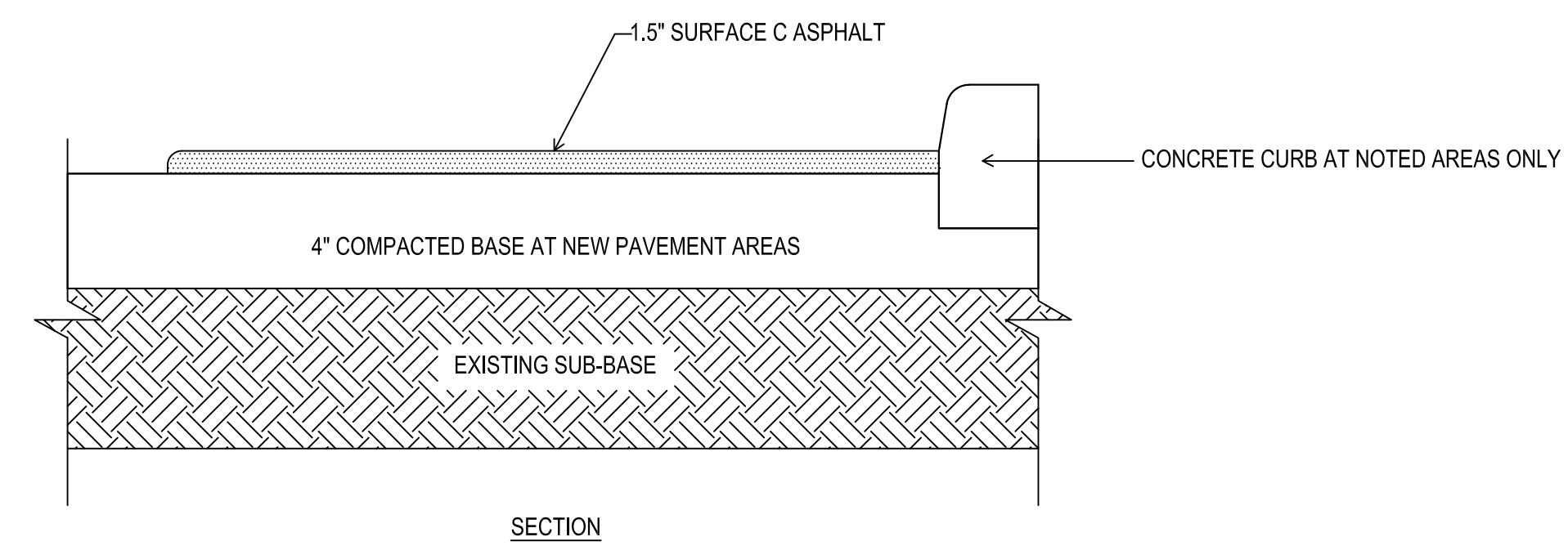
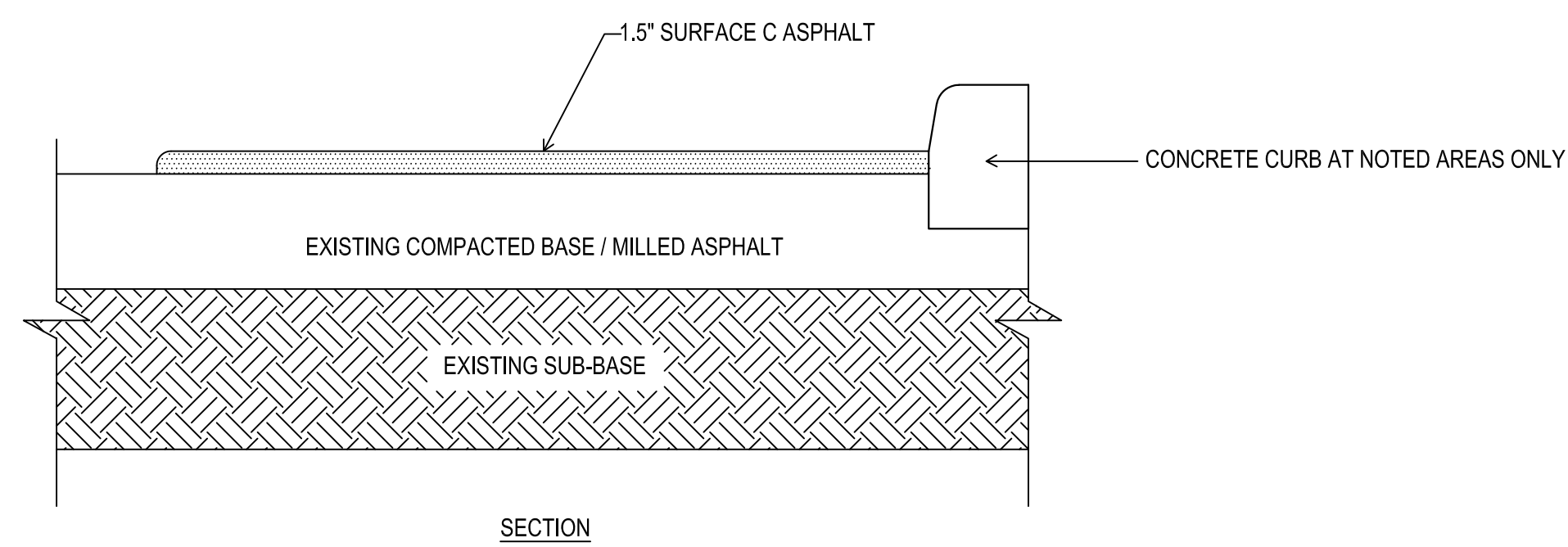
REVISION	DATE

Cart Path			Curbing
HOLE	Remove	New	Total Curb
1	2455	2455	450
2	1444	1444	390
3	1404	1717	275
4	1260	1260	470
5	1131	903	170
6	2096	9096	603
7	790	790	323
8	1988	1988	686
9	1620	1402	266
10	712	712	225
11	1850	2083	515
12	1895	1895	693
13	1237	1237	281
14	1401	1289	363
15	650	675	245
16	1638	1638	502
17	928	928	197
18	1345	1235	191
Putting		180	480
	25,847 LF	32,927 LF	7325 LF

Note: LF noted in chart are for reference only. Contractor shall verify quantities for bidding purposes.

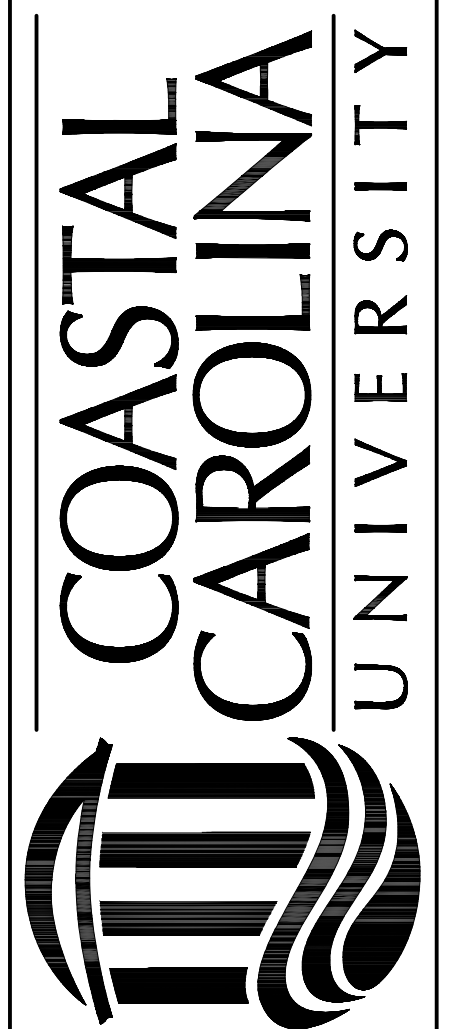


BARRIER CURB DETAIL (TYP.)



HACKLER GOLF COURSE CART PATHS AND CURBING
 RE-BID
 PROJECT NO. H17 - N129 - MJ
 DETAILS
 FACILITIES DESIGN & ENGINEERING

FACILITIES DESIGN & ENGINEERING
 P.O. BOX 261954
 CONWAY, SC 29528
 One Joe Carter Way
 CONWAY, SC 29526



SEAL

DATE: 12-7-2021
 SCALE: NTS
 DESIGN BY:
 DRAWN BY: MWA
 SHEET

C-6